

Aspheric solutions
from a single source.

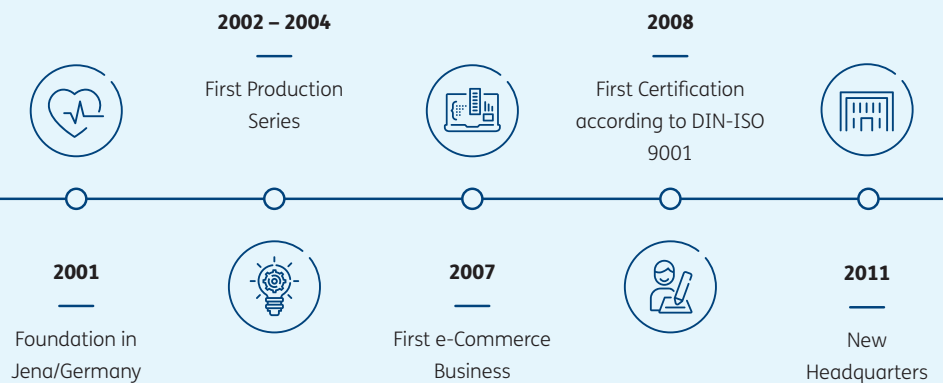
Visionen leben

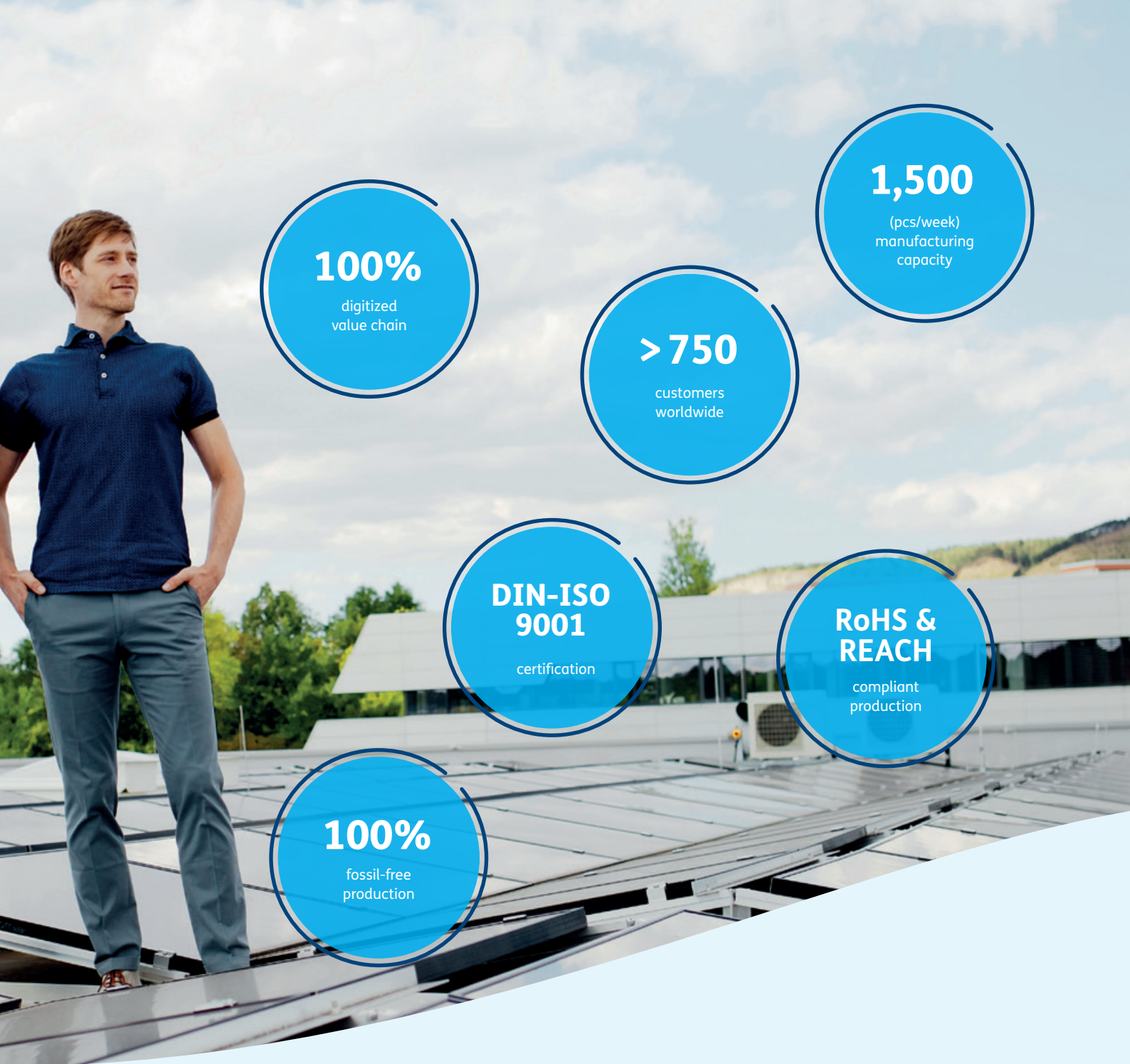
EXCEEDING EXPECTATIONS IN EVERY WAY

Visionen leben – Bringing visions to life. With this mission, asphericon is continuously pushing the boundaries of what is possible and establishing new milestones in the world of photonics. Our passion for revolutionizing the manufacturing of aspheric systems with new technologies is changing the degree of precision and quality that is possible. By combining a worldwide unique CNC control technology with high-end manufacturing processes, we routinely achieve unique levels of dimensional precision for optical components, assemblies and systems.



ASPHERICON MILESTONES





100%
digitized
value chain

1,500
(pcs/week)
manufacturing
capacity

> 750
customers
worldwide

**DIN-ISO
9001**
certification

**RoHS &
REACH**
compliant
production

100%
fossil-free
production

2012
Introduction of
High-End Finishing



2015 – 2018
Extended Product
Portfolio (BeamTuning
& Freeforms)



2019
Foundation of
asphericon s.r.o.



2014
Foundation of
asphericon, Inc.



2018
High Power
Laser Coatings



Fully digitized process landscape

INTEGRATED MANUFACTURING FOR HIGH-QUALITY AND EFFICIENT RESULTS

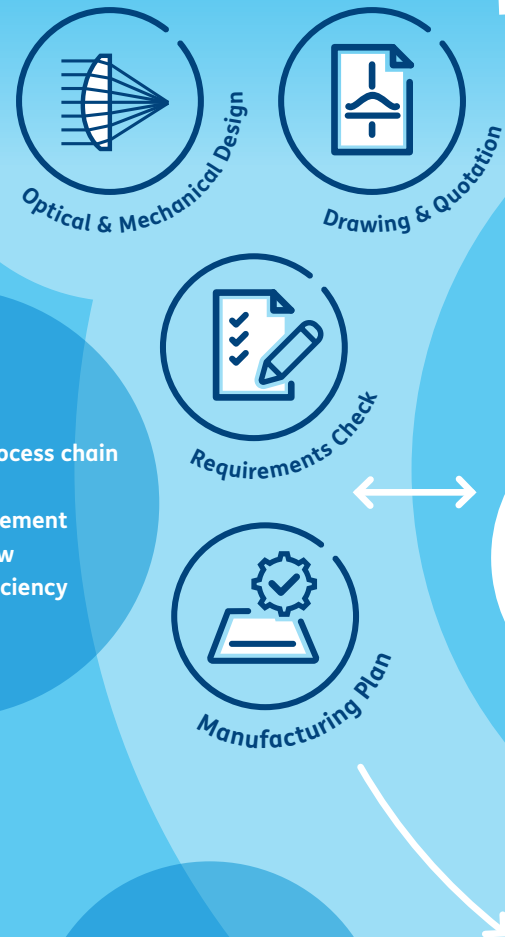
Software architecture as the central success factor for reliable, effective and efficient manufacturing of photonic components and systems. We at asphericon have been using and defining Industry 4.0 for nearly 20 years. The principle behind this: We digitize your requirements and transfer them directly into the manufacturing process. No manual processing, everything is managed digitally: starting with all specifications, through the entire production process to the final documentation. This results in extremely flexible manufacturing processes for prototypes, single pieces or large series. asphericon reduces complexity, uses big data for optimizations, manufactures and documents according to DIN-ISO standards. Projects can be easily reproduced: Trust the technology leader!

Features

- Securing robust process chain
- Maximizing output
- Complexity management
- Optimized workflow
- Manufacturing efficiency

Features

- Real-time performance check
- Guaranteed reproducibility



Customer



Features

- o 100% Digital machine control
- o 100% Digital data world
- o 100% Traceability
- o Big-Data management
- o Reliability

Industry 4.0
since 2001

Performance Simulation

asphericon

Automatic Documentation

Maximum Data Security

Intelligent Software

In-house Hosting



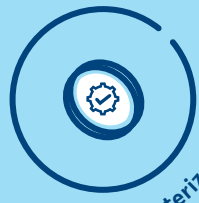
Assembly



Refinement



Coating



Characterization

Features

- o Digital shift log
- o Optimized resource control
- o Live inventory



CNC



High-End Finishing



Metrology

Features

- o Metrology automation
- o Intelligent measurement according to DIN-ISO
- o Tolerance check according to DIN-ISO

RoHS & REACH Compliance

DIN-ISO 10110

Everything from a single source

FROM COMPONENTS TO SYSTEMS AND SERVICES

asphericon combines a researcher's pioneering spirit with the practical ability to implement customer-oriented, economical solutions. Latest manufacturing technologies, continually evolving proprietary control software, world class metrology equipment, and highly qualified employees ensure that we can provide more than 750 customers worldwide with innovative solutions. We will assist you from the initial optical design, through manufacturing and coating, precision metrology, optical characterization to the assembly of optical modules to complete ready-made systems – everything at a space approved quality level.

Freeforms

Acyllinders

Axicons

Aspheres

Spheres

Components

Assembly

Mechanical Design

Optical Design

REFERENCE #1

ASPHERES FOR OUTER SPACE: SENTINEL-4 SATELLITE



- = Developing and manufacturing lenses to withstand extreme conditions in space
- = Demanding materials (e.g. CaF₂) to withstand extreme conditions in space
- = Aspheres with diameters of 50 to 80 mm and a spectral resolution of 0.12 to 0.5 nm
- = Ångstrom polish roughness values of 5 Å

READ MORE:



Monoliths
Multiplets
Doublets
Mounted Optics



Services

Laser Marking
Edge Varnishing
Refinement

Durable Systems
Miniaturized Systems
High Power Systems
High-NA Objectives
Beam Shaping
Beam Expansion

Systems

Characterization
Coating
Metrology

REFERENCE #2 FREEFORM FOR A THERMOGRAPHIC SYSTEM



- = Development/manufacturing of an IR monolith with freeform & aspheric surfaces
- = Space- and weight-saving optical design
- = "Design to cost": Optimization of the entire process chain

READ MORE:



Solutions for various industries



LIFE SCIENCE & MEDICAL

- = Optics with perfect imaging qualities
- = BeamTuning/BeamShaping for optimized illumination (e.g. in fluorescence microscopy)
- = High-precision antireflection, dielectric and filter coatings for separation of wavelengths
- = Diffraction-limited optical systems
- = Compact designs with best imaging results



LASER TECHNOLOGY

- = Optics, mirrors and powerful systems for maximum laser power
- = High-end finishings for ultra-precise optical surfaces
- = High-precision Gauss to Top-Hat beam shapers
- = Coatings providing desired spectral properties to improve the durability of high energy lasers
- = Optics/coatings resistant to harsh environments
- = Objective lenses for laser material processing



INDUSTRIAL & MECHANICAL ENGINEERING

- = Lenses with lowest roughness values for perfectly focused lines & minimal scattering
- = Mirrors and reflectors with high reflectivity and excellent long-term stability
- = Temperature resistant coatings
- = High-performance freeform systems with miniaturized designs & perfect image quality
- = UV, VIS, IR optics with best imaging properties



IMAGING & DISPLAY

- = High-end aspheres for perfect imaging qualities and high-resolution images
- = Customer-specific mirrors
- = Compact freeforms for image processing systems of reduced size
- = Anti-reflective coatings or wavelength-specific filter layers
- = High-end finishing for min. roughness values, better imaging and focusing of incident rays

REFERENCE #3

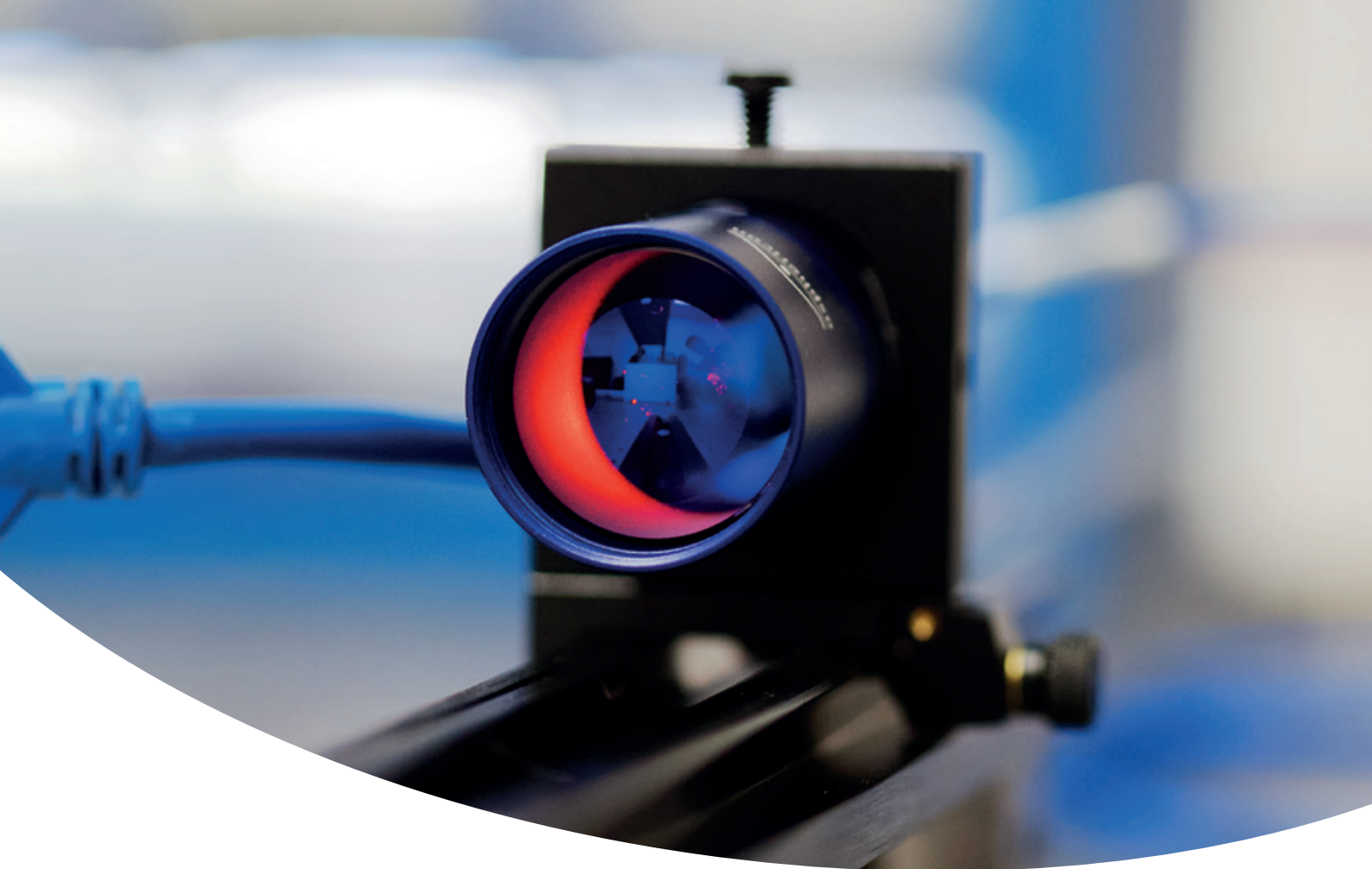
BEAM SHAPER FOR FLAT-FIELD ILLUMINATION



- = Solution for even illumination in laser-based microscopy, e.g. fluorescence microscopy
- = Beam shaper for transforming Gaussian beams into flat Top-Hat profiles
- = Homogeneity of illumination: > 95%

READ MORE:





SOLUTIONS FOR SAFETY & SECURITY

- = Optical designs reducing the complete system to min. size and weight
- = Robust and durable optics resistant to harsh environments (e.g. high temperature differences, humidity or contamination)
- = Ultra-hard, sputtered coatings up to 5.1 μm
- = (Anti-reflection) coatings to improve the quality of your optical elements
- = IR optics to transmit infrared rays
- = Optics for thermographic cameras with high precision



AUTOMOTIVE & AEROSPACE INDUSTRY

- = Temperature-resistant and durable optics with best imaging results
- = High-End Finishings for lowest roughness
- = Mirrors of highest quality for perfect images, clearest view and lowest glare
- = Freeform systems for effective transmission of radiation with reduced production size
- = Optical components for challenging LIDAR solutions
- = Compact and effective optical designs

REFERENCE #4 SPHERES AND ASPHERES FOR STAR TRACKER



- = Ultra-compact optical system using aspheric and spherical components
- = Radiation-resistant glasses, surface form tolerances $\leq 0.5 \text{ fr}$ and roughness $\leq 0.2 \text{ nm}$
- = Super wideband AR-coating (ARSBB 480–850nm) to support thermal stability

READ MORE:

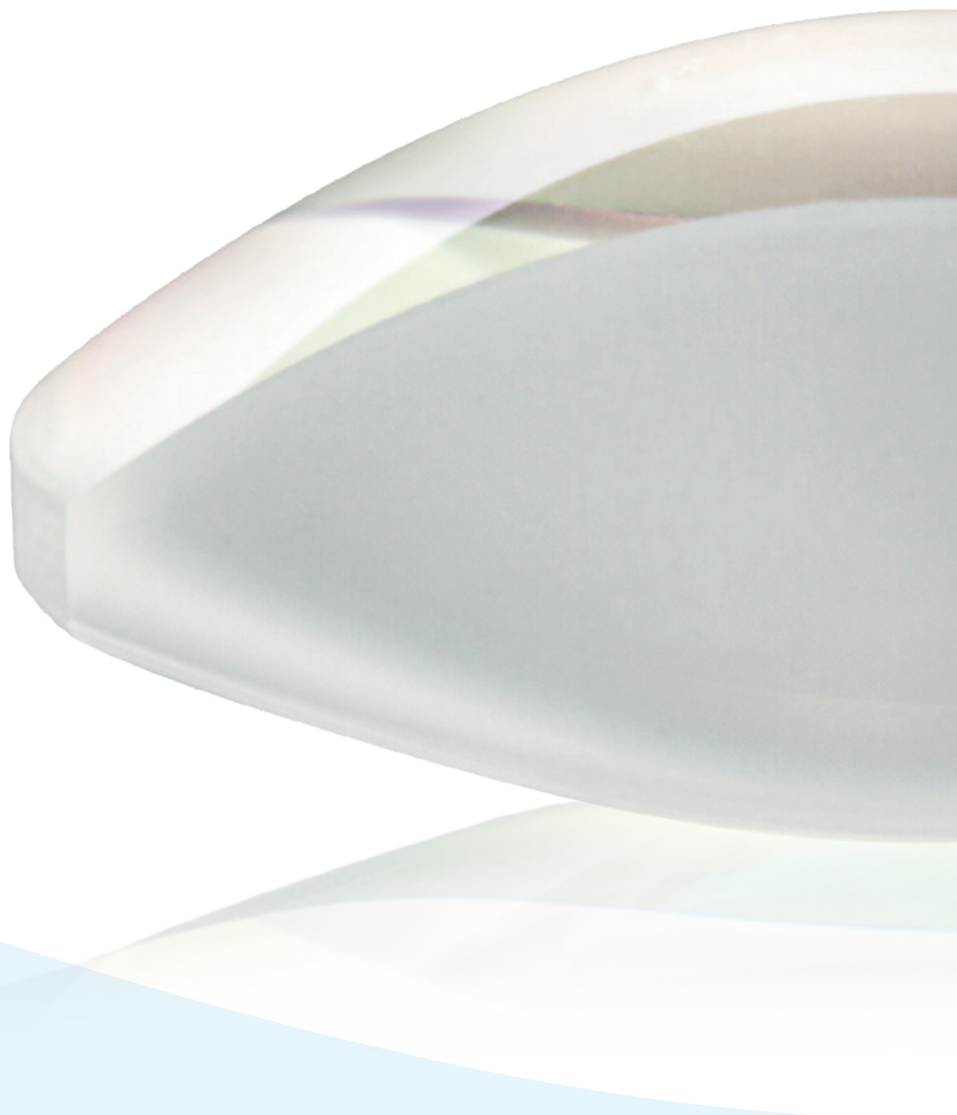




Single components for the highest demands

SETTING THE STANDARD OF TOMORROW

Our comprehensive product range offers the perfect solution for your application. Discover a large number of user-specific elements as well as off-the-shelf optics – from high-quality aspheres, axicons and aspheric cylinders through mirrors and reflectors to ultra-precise mounted optics, freeforms and doublets. With the latest technologies we manufacture optical components in various shapes for all wavelengths, using a wide range of materials from more than 100 optical glasses, crystals, polymers and ceramics to semiconductors and metals.





Wave-lengths

UV, VIS, NIR, MIR

Materials

All optical Glasses and Fused Silica, Optical Crystals like CaF_2 , Sapphire, IR materials (Infrared Glasses, Silicon, Germanium), Polymers, Metals

Shapes

Aspheres, Axicons, Acylinders, Spheres, Mirrors, Doublets/ Multiplets, Freeforms



ASPHERES

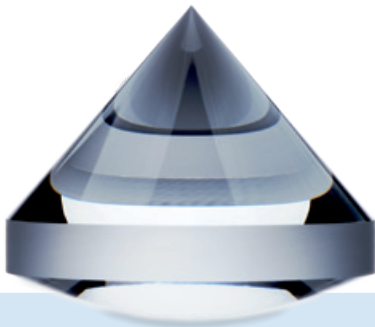
Aspheres have excellent imaging properties due to their optimized shape. The main advantage is the ability to correct spherical aberrations. By using an asphere, the total number of elements in an optical system can be reduced. The result is a much more compact and powerful design than a comparable system based on spherical lenses.

CUSTOM ASPHERES

- = Materials: almost every type of glass, silica, germanium, silicon, IR lenses, zerodur
- = Diffraction-limited quality (Strehl up to 0.99)
- = Roughness values as low as 5 Å
- = High-end optical coatings

STOCKOPTICS ASPHERES

- = Materials: S-LAH64, N-BK7, fused silica
- = Diameter: 10 to 100 mm
- = 4 standard coatings
- = Quality: $RMSi \leq 0.3 \mu m$
- = Also available: mounted aspheres



AXICONS

In contrast to aspheric lenses, the shape of an axicon resembles a cone. The conical shape of the axicon generates ring-shaped beam profiles, which can be used in a variety of applications.

CUSTOM AXICONS

- = Materials: almost every type of glass, silica, germanium, silicon, IR lenses, zerodur
- = Excellent quality (roughness values $\leq 5 \text{ \AA}$)
- = High-end optical coatings

STOCKOPTICS AXICONS

- = Material: fused silica
- = Diameter: 25.4 – 50.8 mm
- = 4 standard coatings
- = Quality: $RMSi < 0.07 \mu m$
- = Available as mounted axicons

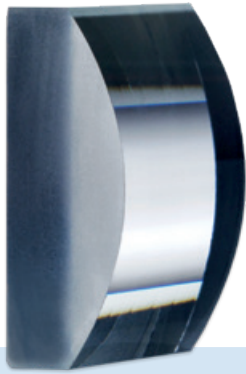
OFF-THE-SHELF DELIVERY



The advantages of precision-made optics combined with cost advantages of serial production: all StockOptics can be ordered directly off-the-shelf. Benefit from fast availability and short delivery times.

READ MORE:





ACYLINDERS

Aspheric cylinders can be realized in plano-convex, plano-concave, bi-concave or bi-convex shapes. We offer specific lenses with a cylinder surface and both spherical and aspheric rear surfaces.

CUSTOM ACYLINDERS

- = Materials: almost every type of glass, silica, germanium, silicon, IR lenses, zerodur
- = Outstanding quality (roughness values $\leq 5 \text{ \AA}$)
- = High-end optical coatings

STOCKOPTICS ACYLINDERS

- = Material: S-LAH64
- = Size: 10×10 to 50×50 mm
- = 3 standard coatings
- = Quality: $\text{RMSi} \leq 0.5 \mu\text{m}$
- = Obtainable with high-precision mountings



SPHERES

asphericon's product range includes plano-convex/ plano-concave, bi-convex/bi-concave lenses as well as achromatic singlets, doublets and triplets in a wide variety of geometries and materials.

CUSTOM SPHERES

- = Materials: almost every type of glass, crystals, germanium, silicon, metals, PMMA, IR materials
- = High quality customized coatings (spectral range from 190 nm to 5.1 μm)
- = Reasonable delivery times
- = RoHS conformity

OPTICAL DESIGN FILES



For seamless planning of your experimental set-up, we offer a selection of optical design files (Code V, Zemax, etc.) for free download on our website.

READ MORE:





MIRRORS

Aspheric mirrors, including paraboloids, hyperboloids and ellipsoids, as well as mirrors with a customer specific aspheric surface, are among the specialties of asphericon.

CUSTOM MIRRORS

- = Materials: almost all types of glass, e.g. fused silica, as well as germanium, silicon, zerodur, infrared glass and CaF_2
- = Accuracies of up to 50 nm global form deviation (irregularity) or 25 nm RMSi
- = Achievable roughnesses, depending on the material and shape, up to 0.5 nm Rq



DOUBLETS/MULTIPLETS

Our latest manufacturing technologies also enable the production of robust aspheric and bi-aspheric doublets and multiplets from relevant optical materials. The resistance of the cemented lenses to extreme environmental conditions is verified by asphericon within the scope of in-house tests according to DIN and/or MIL standards.

CUSTOM DOUBLETS/MULTIPLETS

- = Shapes: any edge geometries, also steps
- = Outer surfaces can be cylindrical or freeform
- = Diameter: up to 250 mm
- = $< 10 \mu\text{m}$ ETV
- = Optional: combinable with environmental tests

HIGH-END FINISHING



For maximum precision and unrivalled high surface quality asphericon offers various High-End Finishing processes. The asphericon Ångström-Polishing, for example, enables roughness values of 5 Å (Rq according to ISO 10110) on all aspheric surfaces.

READ MORE:





FREEFORMS

Freeformed surfaces have no rotational symmetry and therefore allow the implementation of completely new concepts for optical systems. The use of freeforms reduces the number of elements in an optical set-up, allowing smaller, lighter and more efficient systems.

CUSTOM FREEFORMS

- = Unconventional shapes in all materials (also ceramics)
- = Lenses, mirrors, monolithic elements with diameters up to 300 mm
- = Excellent surface quality (up to at least RMSi 50 nm)
- = CGH-free measurement including all position tolerances (complete component)
- = Individual coating and mounting concepts



MONOLITHS

Monolithic optical systems are characterized by the possibilities of a high degree of integration, small pack sizes and robustness against environmental influences. Due to the necessary folding of the optical beam paths, freeform optical surfaces must inevitably be used in order to correct aberrations in the system sufficiently.

CUSTOM MONOLITHIC SYSTEMS

- = Unconventional shapes in many materials (also ceramics)
- = Monolithic systems with diameters up to 100 mm
- = Excellent surface quality (up to at least RMSi 50 nm)
- = CGH-free measurement including all position tolerances (complete component)
- = Individual coating and mounting concepts

FREEFORM OPTICS PLUS (FO+)



Together with regional partners asphericon is working on the research project "Freeform Optics Plus (fo+)" since 2014 to develop and distribute innovative freeform optical systems.

READ MORE:



Next generation of optical systems

CUSTOM SYSTEMS

asphericon designs, develops and manufactures complete assemblies and optical systems suitable for your applications. Our team will support you from the first feasibility study, through prototype construction, to precise system integration. Benefit from in-house manufactured high-precision mounts, assembly in ISO 5 and ISO 7 certified cleanroom systems and standardized testing and documentation processes. Everything from a single source.



1 MINIATURIZED DESIGNS, E.G. MONOLITHIC (FREEFORM) SYSTEMS

2 HIGH-QUALITY OPTICAL SURFACES

3 INTELLIGENT ASSEMBLY CONCEPTS



- 4 HIGH-QUALITY (LOW LOSS) COATINGS WITH LONG-TERM STABILITY
- 5 EXACT ADJUSTMENT WITH HIGH STABILITY

- 6 SENSITIVE MATERIALS LIKE CaF_2



WIDE RANGE OF CUSTOMIZED OPTICAL SYSTEMS

In order to find the optimum solution for every application, we offer a wide range of options for customer-specific optical systems. The spectrum ranges from **high-NA lenses** and **high power systems** to **miniaturized solutions** and **durable optical systems**. Of course, this is never an either-or-decision, rather different focal points can

be set and combined, resulting in highly efficient system solutions. The reverse case, a reduction to the essentials with simultaneously optimised performance, for example for selected series systems, can also be flexibly implemented. Due to the 100% traceability of all system components, a quality control and a comparison of the current performance can be carried out at any time.

ASPHERICON OPTICS POSTERS



Know-how in a nutshell: Learn more about the world of aspheres and latest beam shaping concepts. The asphericon poster collection provides theoretical insights and describes application areas. Find out more online.

READ MORE:



BEAMTUNING SYSTEM

Beam expansion and beam shaping beyond the diffraction limit – BeamTuning by asphericon.

The entire system comprises of beam expanders, fiber collimators, elements for wavelength adaptation, beam shapers as well as intra- and cross-

system adapters for a wide wavelength range (355 nm, 500 – 1600 nm). An intelligent mounting concept ensures easy and timesaving handling, no adjustments needed. Discover plug & play in perfection.

- = Easy to connect (free beam or fiber coupled)
- = Flexible choice of input and output beam diameters
- = Short overall length (three times shorter than average)
- = Optimized to all wavelengths [355 nm, 500 – 2500 nm]



BEAMTUNING IN ACTION



Join our experts in the lab and get to know the world of BeamTuning. The video series shows the main working principles and various options for beam expansion and beam shaping. Live plug and play.

READ MORE:



Customized services

EVERYTHING FROM A SINGLE SOURCE

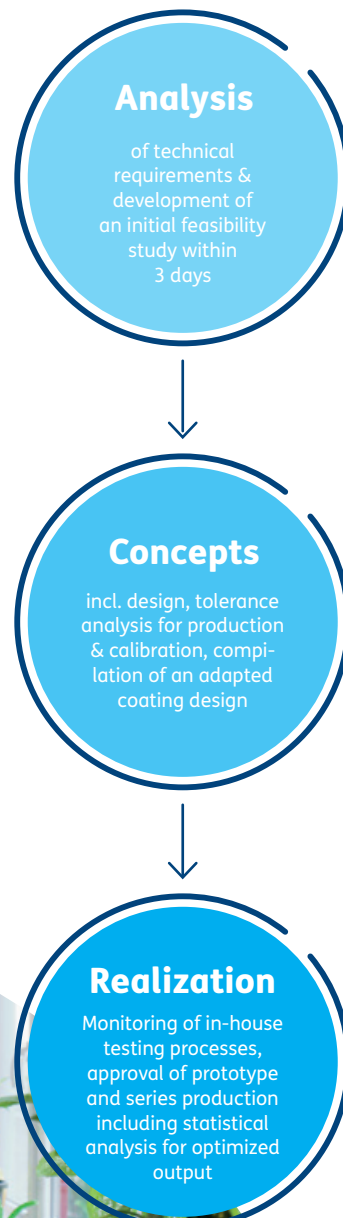
asphericon brings together its technological leadership in a comprehensive product range – the perfect basis for your optical application at the highest level. Benefit from customer-oriented and economical solutions. We accompany you from the first optical system design through manufacturing and coating, the precise measurement and documentation up to the assembly of complete modules and systems as well as their optical characterization and refinement.

OPTICAL DESIGN

In addition to the optical design of refractive, diffractive and reflective elements, our expertise includes system design specially designed to meet the requirements of ultrashort laser pulses. When realizing individual design solutions, we are focused on development, production times and outstanding quality, while always keeping an eye on economic efficiency.

MECHANICAL DESIGN

Mechanical design from asphericon comprises the development and production of frames, holders and mounts up to a diameter of 300 mm as well as high-precision in-house machining of metal.





ASSEMBLY

asphericon supports you in the development and production of mounts as well as the assembly of complete lenses and (sub-)systems. Specific requirements including environmental conditions, the choice of materials, resilience, and quality levels are converted into cost-efficient mechanical designs. We are also able to meet demanding cleanliness levels. Depending on your requirements, we implement individual production steps in clean room classes 5 and 7.

METROLOGY

A wide range of tactile and interferometric measuring instruments is used to achieve accurate and reproducible results. asphericon's metrology spectrum includes:

- = Tactile measurement up to diameters of 260 mm
- = Full-surface non-contact measurement up to 420 mm
- = Non-contact center thickness measurement
- = Roughness measurement $R_a < 0.5$ nm RMS, measuring field up to 1 x 1 mm
- = Measurement of freeforms: form and positional tolerances, roughness
- = Measurement/position check of mounts, mounted optics and complete systems
- = Confocal 3D defect characterization



CHARACTERIZATION

Characterizations can be optionally performed for lenses and optical systems. The high quality of our products is guaranteed by a high-resolution wavefront measurement and a certificate.

Optical characterization at asphericon includes:

- = Wavefront measurement (wavelength range 400 - 1064 nm, other on request)
- = Measurement of MTF, PSF and Strehl ratio

EQUIPMENT: Phasics™ SID4 – HR

LEADING METROLOGY KNOW-HOW

asphericon combines a unique measuring equipment with 100% digitized processes. This guarantees complete automation of the entire measuring process, ensures reproducibility and efficiency. Get to know our in-house metrology know-how.

READ MORE:



COATINGS

High-end coatings for your challenging products in outstanding quality and with reasonable delivery times. Equipped with state-of-the-art manufacturing and metrology technologies, our experienced team of technicians turns coating ideas into reality.

- = Coating: dielectric mirrors, anti-reflective coatings, filter coatings, metallic mirrors, beam splitters
- = Substrate sizes: up to a diameter of 300 mm
- = Spectral range: 190 – 5100 nm
- = Coatings with low scattering and high reflection
- = Ultra-hard layers with high climatic and mechanical stability
- = Fast-Lane coating (24/48h delivery)

Magnetron Sputtering (MS)

technology

Ion Assisted Deposition (IAD)

technology

Electron Beam Evaporation (EBE)

technology

ADDITIONAL TEST METHODS

- = Realization and documentation of environmental tests according DIN, MIL-C-675C, MIL-C-48497A, MIL-PRF-13830, DO-160G, etc.
- = In-house tests for temperature, humidity, salt spray/solubility and water
- = Laser induced deflection (LID)
- = Cavity ring down method (CRD)

HIGH-PERFORMANCE OPTICAL COATINGS



Learn more about selected optical coatings with their fields of application as well as modern coating technologies in a two-part blog article series.

READ MORE:



REFINEMENT

EDGE VARNISHING

To extinguish stray light, for aperture diaphragms or cosmetic aspects, asphericon also offers edge varnishing for optical components. Our selection of different varnish types enables a homogeneous, rich black, as well as arbitrarily ground and polished component contours due to the preceding, optimized surface treatment.

- = Materials: all types of glass, crystals and ceramics
- = Solvent resistant
- = Special paintwork possible on request (e.g. conductive paintwork)

LASER MARKING

Laser marking allows the clear identification and traceability of individual lenses up to complex systems. Thanks to defect-free markings through optimized pulse regimes, azimuths, side markings or scales can be used as assembly aids, use character strings or logos to complete your product.

- = Free selectable font sizes and types
- = Materials: all types of glass, plastics, metals, ceramics, crystals and semiconductors
- = Marking size: 1 - 80 mm
- = Positioning accuracy: < 0.1 mm
- = Cylindrical edges/plane front surfaces (vertical and horizontal) 360° circumferential possible
- = Optional: discreet lettering (counterfeit protection)

ULTRA-HARD SPUTTERING LAYERS



Ultra-hard, climatically and mechanically stable coatings in the spectral range from VIS to MIR thanks to magnetron sputtering technology. asphericon coats customer-specific optics made of glass, quartz or crystals. Also as a 24/48h Fast-Lane service. Learn more online.

READ MORE:



Production capabilities

STOCKOPTICS ASPHERES

Specifications	a High-NA (S-LAH64)	a Low-NA (N-BK7)	a UV-grade fused silica
Diameter	10 – 50 mm	12.5 – 100 mm	12.5 – 50 mm
Diameter Tolerance	+0/-0.05 mm	+0/-0.05 mm	+0/-0.05 mm
NA	0.49 – 0.61	0.23 – 0.61	0.29 – 0.48
f/d	0.71 – 0.90	0.8 – 2.0	1.0 – 1.6
λ_{Design}	780 nm	780 nm	285 nm
RMS Irregularities (RMSi)	$\leq 0.5 \mu\text{m}$	$\leq 0.5 \mu\text{m}$	$\leq 0.3 \mu\text{m}$
EFL Tolerance	$\leq 0.1\%$	$\leq 0.1\%$	$\leq 0.1\%$
Surface Imperfections (Scratch/Dig)	60 – 40	60 – 40	20 – 20
Center Thickness Tolerance	$\pm 0.05 \text{ mm}$	$\pm 0.05 \text{ mm}$	$\pm 0.05 \text{ mm}$
Clear Aperture	$\geq 90\%$	$\geq 90\%$	$\geq 90\%$
Coating	3 standard coatings	3 standard coatings	4 standard coatings

CUSTOM ASPHERES

Specifications	Standard-Quality	Precision-Quality	High-End Finishing	Diamond-Turning
Diameter	8 – 300 mm	4 – 250 mm	6 – 300 mm	1 – 420 mm
Diameter Tolerance	$\pm 0.10 \text{ mm}$	$\pm 0.01 \text{ mm}$	$\pm 0.01 \text{ mm}$	
Center Thickness	2 – 60 mm	2 – 60 mm	<60 mm	from 0.5 mm
Center Thickness Tolerance	$\pm 0.10 \text{ mm}$	$\pm 0.05 \text{ mm}$	$\pm 0.05 \text{ mm}$	
RMS Irregularities (RMSi)	0.75 – 0.3 μm	0.09 μm	< 0.015 μm	0.02 μm
Surface Imperfections (Scratch/Dig)	60 – 40	40 – 20	10 – 5 for $\varnothing < 2''$; 20 – 10 for $\varnothing > 2''$	
Surface Roughness	3 nm	1.5 nm	0.5 nm	1 nm
Full-surface Interferometric Measurement	Optional	Optional	Guaranteed	Guaranteed
Coating			Customer-specific	

SPHERES

Specifications	Standard-Quality	Precision-Quality	High-End Finishing
Diameter	8 – 300 mm	8 – 300 mm	8 – 300 mm
Diameter Tolerance	$\pm 0.1 \text{ mm}$	$\pm 0.1 \text{ mm}$	$\pm 0.01 \text{ mm}$
Center Thickness	2 > CT < 100 mm	2 > CT < 100 mm	2 > CT < 100 mm
Center Thickness Tolerance	$\pm 0.1 \text{ mm}$	$\pm 0.03 \text{ mm}$	$\pm 0.01 \text{ mm}$
Tolerance of Radius	$\pm 0.1\%$	$\pm 0.01\%$	$\pm 0.01\%$
Tilt	300"	30"	15"
Surface Irregularity	0.8 fr	0.3 fr	0.3 fr
Surface Imperfections (Scratch/Dig)	60 – 40	40 – 20	20 – 10
Surface Roughness Rq	2 nm	1.5 nm	0.5 nm
Coating			Customer-specific

AXICONS

Specifications	Custom Axicons	StockOptics Axicons
Diameter	1 – 420 mm	25.4 / 50.8 mm
Diameter Tolerance	+/- 0.03 mm	+/- 0.1 mm
RMS Irregularities (RMSi)	40 nm	≤70 nm
Surface Imperfections (Scratch/Dig)	20 – 10	40 – 20
Coating	Customer-specific	4 standard coatings
Laser Damage Threshold	Customer-specific	12 J/cm ² , 100 Hz, 6 ns, 532 nm
Full-surface Interferometric Measurement	Optional	Optional

ACYLINDER

Specifications	Custom Acylinder	StockOptics Acylinder
Diameter	1 – 420 mm	10 × 10 – 50 × 50 mm
RMS Irregularities (RMSi)	20 nm	≤ 500 nm
Surface Imperfections (Scratch/Dig)	20 – 10	60 – 40
Coating	Customer-specific	3 standard coatings
Laser Damage Threshold	Customer-specific	12 J/cm ² , 100 Hz, 6 ns, 532 nm
Full-surface Interferometric Measurement	Optional	Optional

MIRRORS

Specifications	Custom Mirrors
Diameter	1 – 420 mm
Diameter Tolerance	< 0.015 μm
RMS Irregularities (RMSi)	25 nm
Surface Imperfections (Scratch/Dig)	20 – 10
Coating	Customer-specific
Full-surface Interferometric Measurement	Optional

All products are also available as reflective mirror elements.

FREEFORMS

Specifications	Standard-Quality	Precision-Quality	Diamond-Turning
Diameter	8 – 300 mm	4 – 300 mm	1 – 150 mm
Diameter Tolerance	± 0.10 mm	± 0.01 mm	
Center Thickness	2 – 60 mm	2 – 60 mm	from 0.5 mm
Center Thickness Tolerance	± 0.10 mm	± 0.05 mm	
RMS Irregularities (RMSi)	0.75 – 0.3 μm	< 0.05 μm	0.1 μm
Surface Roughness Rq	2.0 – 3.0 nm	1.5 – 2.0 nm	up to 1 nm
Full-surface Interferometric Measurement	Optional	Optional	Optional



asphericon worldwide

THE INTERNATIONAL SALES NETWORK OF ASPHERICON



asphericon, Inc.
Sarasota, FL | USA
info@asphericon-inc.com

- = Founded: 2014
- = Sales & service department



asphericon GmbH
Jena | Germany
sales@asphericon.com

- = 150 employees
- = Facility area (sqm): 4,000
- = Manufacturing capacity (pcs/week): 1,250



4

asphericon, s.r.o.

Jermanice/Liberec | Czech Republic
sales@asphericon.com

- = Founded: 2019
- = 20 employees
- = Facility area (sqm): 1,600
- = Manufacturing capacity (pcs/week): 250

1 SALES PARTNER

UNIOTECH CO., LTD.

Daejeon | South Korea
jason@uniotech.kr

2 SALES PARTNER

AINNOTECH Inc.

Seoul | South Korea
korea@ainnotech.com

3 SALES PARTNER

OPTO SCIENCE, Inc.

Tokyo | Japan
info@optoscience.com

4 SALES PARTNER

OR-YAM OPTRONICS LTD.

Jerusalem | Israel
sales@or-yam.com

5 SALES PARTNER

SAETRA (PTY) LTD.

Pretoria | South Africa
enquiry@saetra.co.za

asphericon GmbH



+49 (0) 3641 – 31 00 500



+49 (0) 3641 – 31 00 501



sales@asphericon.com



www.asphericon.com

Stockholmer Straße 9
07747 Jena
Germany

asphericon, Inc.



+1 941 564 0890



info@asphericon-inc.com



www.asphericon.com

5500 Bee Ridge Road,
Suite 104
Sarasota, FL 34233 | USA

asphericon, s.r.o.



+420 488 100 300



sales@asphericon.com



www.asphericon.com

Miliřská 449,
Jeřmanice 463 12
Czech Republic

